



USER GUIDE

SNAPconnect E12

SNAP Enabled Gateway

©2008-2019 Synapse Wireless, All Rights Reserved. All Synapse products are patent pending. Synapse, the Synapse logo, SNAP, and Portal are all registered trademarks of Synapse Wireless, Inc.

Doc# 116-081614-030-C001

6723 Odyssey Drive, Suite 3 // Huntsville, AL 35806 // (877) 982-7888 // www.synapsewireless.com

Disclaimers

Information contained in this manual is provided in connection with Synapse Wireless products and services and is intended solely to assist its customers. Synapse reserves the right to make changes at any time and without notice. Synapse assumes no liability whatsoever for the contents of this manual or the redistribution as permitted by the foregoing limited license. The terms and conditions governing the sale or use of Synapse products is expressly contained in the terms and conditions for the sale of those respective products.

Synapse retains the right to make changes to any product specification at any time without notice or liability to prior users, contributors, or recipients of redistributed versions of this manual. Errata should be checked on any product referenced.

Synapse and the Synapse logo are registered trademarks of Synapse Wireless. All other trademarks are the property of their owners.

For further information on any Synapse product or service, contact us at:

Synapse Wireless, Inc.
6723 Odyssey Drive, Suite 3
Huntsville, Alabama 35806
256-852-7888
877-982-7888
256-924-7398 (fax)
www.synapsewireless.com

License governing any code samples presented in this Manual

Redistribution of code and use in source and binary forms, with or without modification, are permitted provided that it retains the copyright notice, operates only on **SNAP**® networks, and the paragraphs below in the documentation and/or other materials are provided with the distribution:

Copyright 2008-2019, Synapse Wireless Inc., All rights Reserved.

Neither the name of Synapse nor the names of contributors may be used to endorse or promote products derived from this software without specific prior written permission.

This software is provided "AS IS," without a warranty of any kind. ALL EXPRESS OR IMPLIED CONDITIONS, REPRESENTATIONS AND WARRANTIES, INCLUDING ANY IMPLIED WARRANTY OF MERCHANTABILITY, FITNESS FOR A PARTICULAR PURPOSE OR NON-INFRINGEMENT, ARE HEREBY EXCLUDED. SYNAPSE AND ITS LICENSORS SHALL NOT BE LIABLE FOR ANY DAMAGES SUFFERED BY LICENSEE AS A RESULT OF USING, MODIFYING OR DISTRIBUTING THIS SOFTWARE OR ITS DERIVATIVES. IN NO EVENT WILL SYNAPSE OR ITS LICENSORS BE LIABLE FOR ANY LOST REVENUE, PROFIT OR DATA, OR FOR DIRECT, INDIRECT, SPECIAL, CONSEQUENTIAL, INCIDENTAL OR PUNITIVE DAMAGES, HOWEVER CAUSED AND REGARDLESS OF THE THEORY OF LIABILITY, ARISING OUT OF THE USE OF OR INABILITY TO USE THIS SOFTWARE, EVEN IF SYNAPSE HAS BEEN ADVISED OF THE POSSIBILITY OF SUCH DAMAGES.

Table of Contents

Overview	1
The Device	2
Getting Started	3
Powering the E12	3
Establishing a Serial Connection	3
Mounting the E12	8
E12 Software Specifics	9
Passwords and root Access	9
E12-Specific Software Packages	9
E12 Physical Interfaces	11
E12 LEDs	11
The SNAP Module-Controlled LED	11
The E12 Button	12
Working With the Gateway's SNAP Module	13
Waking the SNAP Module	13
Resetting the SNAP Module	14
Restoring Functionality to an Unresponsive SNAP Module	14
Upgrading the SNAP Module Firmware	15
Accessing the MicroSD Slot	17
Common Linux Operations	18
Editing Linux Files	18
Making Your Software Run at Startup	18
Running a Script to Completion	18
Starting a Service	19
Setting Your E12's Clock	20
Resetting a Lost User Password	20
Mounting an External Drive	21
Extending the E12 with USB Accessories	22
USB Power	22
Connecting to an Additional SNAP Device	22
Using usb_modeswitch	23
Factory Restore / Re-Flashing Your E12	24
Restoring from a MicroSD Card	24
Specifications and Installation	25
Specifications	25
E12 Dimensions	26

Troubleshooting Common Problems	27
The Ethernet port does not work or eth0 does not appear in ifconfig	27
SNAPconnect is not working	27
I cannot SSH into my E12	27
Regulatory Information and Certifications	28

Overview

IoT solutions demand reliable and flexible wireless connectivity at scale. SNAPconnect gateways are the interface between your SNAP mesh networks and the rest of the world. Whether performing data aggregation to quickly make real-time decisions, merging multiple IoT data streams, or connecting to on-site servers or the cloud, SNAPconnect gateways provide the connectivity your network needs

2.4GHz Flexibility

The SNAPconnect E12 Gateway is available in 2.4GHz and powered by SNAP: the Things Platform. This robust combination ensures that your IoT application can send information to the cloud repository.

Powered by Ubuntu - Easy to Customize

The SNAPconnect E12 Gateway is an embedded Ubuntu Linux computer with the flexibility to add custom or 3rd party software as needed for local databases, IoT platform clients, or other elements. It bridges SNAP edge networks over Ethernet or optional USB connectivity devices such as cell modems, Bluetooth, or Wi-Fi adapters.

Start Quickly with Included Tools

The E12 is ready-made to host SNAP Thing Services – a suite of software tools that unite IoT devices and applications via REST and MQTT for tasks such as data collection, device updates, and network management.

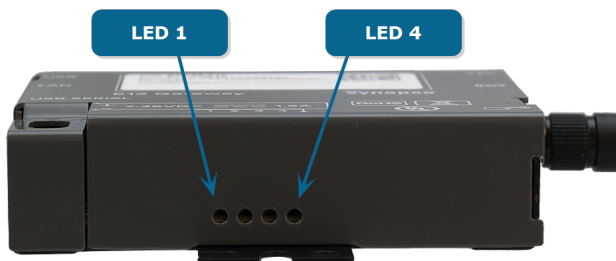
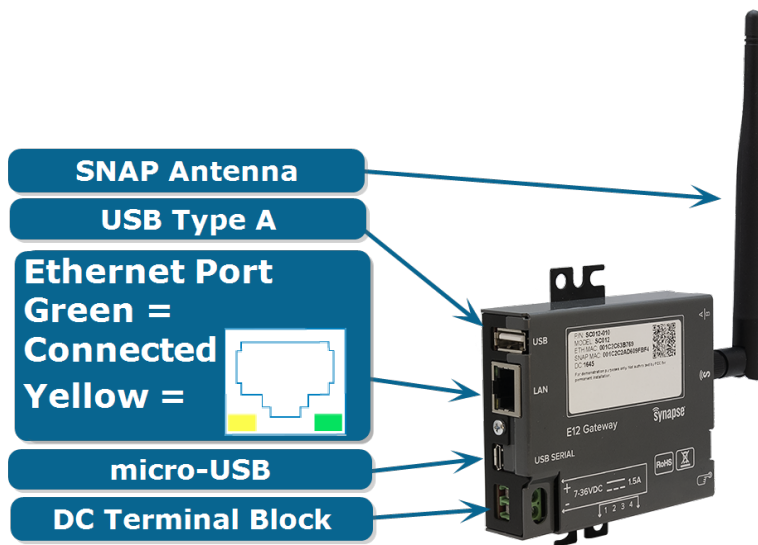
Custom programs can be created with the help of SNAPconnect software libraries making communications with IoT devices in edge networks easy, even in challenging environments.

Protect your Deployment

SNAPconnect gateways emphasize security using AES-128 to encrypt edge network traffic, and standard Linux security tools to secure the backhaul network. SNAP Thing Services utilizes tools like TLS and HTTPS to secure outbound interfaces.

The Device

The images below show an E12 gateway with all features marked:



All E12s include a SNAP-powered module, and will come with an antenna for the module's connection labeled with the Synapse S on the E12's case.

Getting Started

Adding an E12 gateway to your SNAP network is easy, but as with adding any computer to any network, if you don't follow the right steps, you'll end up in the wrong place. These directions provide the steps for connecting to your E12 from either a Windows PC or a Linux PC, which we will refer to as your host PC. These instructions assume that you have some familiarity with your host operating system. See your OS help files if you need assistance installing software or navigating applications.

To get started with the E12, you'll first need to apply power.

Powering the E12

The E12 is powered through the power terminal blocks.

Use only UL 60950-1 2nd Edition AM1+AM2 certified LPS power supplies, rated for relative environmental conditions suitable to your use location with an output of 7-36VDC, 1500mA Max.



NOTE: Some power supply vendors mark the positive “+” lead with a white stripe.

NOTE: The E12 cannot be powered over the USB SERIAL port.

NOTE: If the E12 is installed into an end product, wiring should be done in accordance with the relevant product safety standard of the end product.

Establishing a Serial Connection

Next you'll need to establish a USB serial connection.

To establish a serial connection to the E12 and update the software:

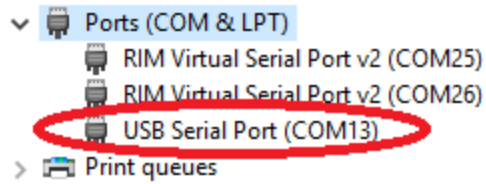
1. Ensure that you have terminal emulation software installed on your host PC. Popular software for this purpose includes Tera Term, PuTTY, minicom, screen, or any of many others.
2. Use a standard USB to micro-USB cable to connect the micro-USB port on your E12 to an open USB port on your host PC .
3. Apply power to the E12.

NOTE: During the upcoming step 4, if you find that your host PC cannot connect to the E12 over the USB connection, you may need to install the FTDI USB to UART VCP drivers, available from <http://www.ftdichip.com>

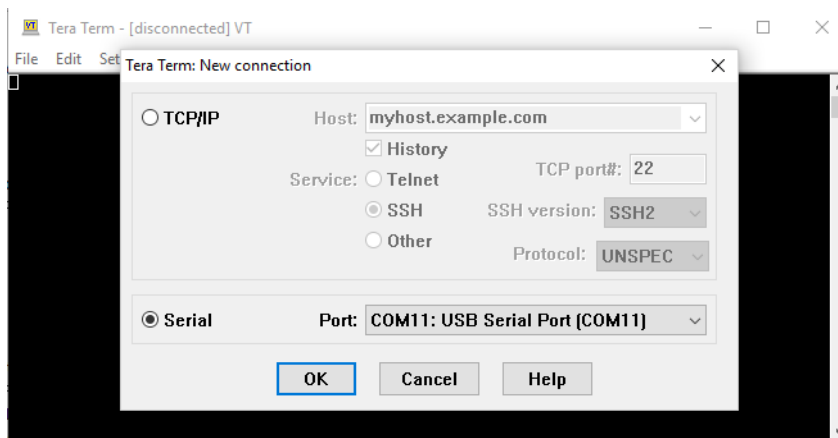
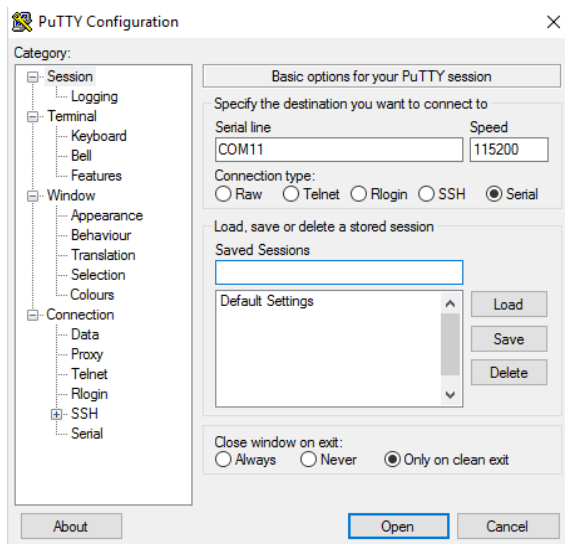
4. Find the serial port that your host PC has assigned to the E12 (over that USB connection)

To find the serial port on a Windows PC:

- a. Check under “Ports” in the Device Manager.



- b. Look for USB Serial Port (COMxx) where the xx will indicate the serial port assigned (e.g., COM3, or COM88).
- c. Connect using your preferred terminal application. Example screenshots of connecting via PuTTY and TeraTerm are provided below:



To find the serial port on a Linux PC:

- a. Before plugging in the E12's USB cable, check for ttyUSB connections in the /dev directory.

- b. Plug in the E12 and look for a new ttyUSBx, where x indicates the USB connection assigned (e.g., ttyUSB0).

```
synapse@synapse ~ $  
synapse@synapse ~ $ ls /dev/ttyUSB*  
/dev/ttyUSB0  
synapse@synapse ~ $  
synapse@synapse ~ $
```

If you had any other USB-serial devices plugged in, you may see more than just /dev/ttyUSB0, which is why you should check for the presence of these devices first.

- c. You can use any of a number of serial terminal programs to connect to your serial port. Linux versions of PuTTY and TeraTerm exist and work the same way shown in the Windows examples above (other than the name of the port to which you are connecting. additionally, utilities such as cu or screen are available as well:

Using cu:

To connect: `sudo cu -l /dev/ttyUSB0 -s 115200`

To disconnect, at the command line type ~. (tilde, period) and then press Enter.

Using screen:

To connect: `sudo screen /dev/ttyUSB0 115200`

To disconnect, press **Ctrl-A**, and then \ (backslash).

5. Using your terminal emulator, connect to the E12 using the following serial port settings:

- 115200 baud
- 8 bits
- No parity
- 1 stop bit
- No flow control

6. Use your terminal emulation window to log in to the E12 gateway.

Username: snap

Password: synapse

NOTE: You must change your password the first time you log in. This prevents you from installing an E12 gateway with the default password set, which is pretty much the definition of a bad security idea. Ubuntu enforces some restrictions on what constitutes a valid password, and these instructions are further defined in the Ubuntu documentation available at <https://help.ubuntu.com/>.

7. Connect your E12 to the internet.

The easiest way to do this is to make a wired connection to a host (i.e., router) that supports DHCP. (Most do, by default.) If you wish to configure your device for a static IP address, you may do so via the serial connection before making your internet connection.

8. Update the Python Development Libraries

Before starting work with the E12, you'll want to make sure you have the latest versions of the software installed on the unit. The E12 makes use of Python Development Libraries that are sometimes updated to add

new functionality and correct bugs. You can update the version installed on your unit by running the command:

```
sudo apt-get install python-dev
```

NOTE: Remember that Ubuntu Linux does not, by default, enable root as a user. The sudo command temporarily escalates your privileges to su (super user), so the E12 will prompt you for your password.

NOTE: If you get a "Requirement already satisfied" message from one of the updates, don't be alarmed. It just means you already have the latest version.

9. Set the Clock

First, you should specify the timezone in which your device will reside. An easy way to do this is to use tzdata, which allows you to select the general region, and then select the specific zone for your location. You can run it with the command:

```
Sudo dpkg-reconfigure tzdata
```

Next, and only if the E12's date is not set (i.e. it is not connected to a network so it does not set the date from an NTP server, and the hardware clock has never been set), set the date manually.

The following example sets the date to April 20, 2016, at 12:30:59 p.m.

```
sudo date --set "2016-04-30 12:30:59"
```

```
Sat Apr 30 12:30:59 CDT 2016
```

You can set the hardware clock from the system clock using the `hwclock` command.

```
sudo hwclock -wu
```

10. Update SNAPconnect

The SNAPconnect software enables the connection from your E12 device to the rest of your SNAP-powered network.

To update SNAPconnect, type the command:

```
sudo -H pip install --upgrade snapconnect -i https://update.synapse-wireless.com/pypi/
```

11. Update PyCrypto

The PyCrypto project is required for using AES128 encryption on your radio network.

To update PyCrypto type the command:

```
sudo -H pip install --upgrade pycrypto
```

That's it! Your E12 is now ready to work with your SNAP-powered network. Your Python program, using the SNAPconnect library or the SNAPtoolbelt utilities, interfaces with the gateway's SNAP module directly, and the rest of your nodes through that. You can also have full internet access via the wired Ethernet connection.

Now it's up to you to do awesome things with your SNAP-powered network.

You can find examples of other people's efforts on the Synapse Wireless repository at GitHub:

<https://github.com/synapse-wireless>.

The site includes sample projects for things like sending data collected by SNAP-powered nodes to cloud services, or an E12-hosted web server. Download the code there, or fork it for your own projects. Better yet, contribute to the code base for other users.

Mounting the E12

The E12 has mounting holes on the outside flanges of the unit, any of which can be used for mounting the E12 to a solid surface.

E12 Software Specifics

The E12 uses Canonical's Ubuntu 14.04, running a custom Linux kernel based on the Beaglebone Black kernel. There are many resources out there for learning about Ubuntu online, and the topic possibilities far exceed the scope of this manual. However there are a few details that warrant discussion.

Passwords and root Access

The default configuration for Ubuntu Linux is to have the root user disabled. This is a security precaution, as it means a hacker who comes across a connection to your device does not automatically know the login name of a user with full administrative rights to your device.

Instead, Ubuntu works with the `sudo` paradigm; when you need to perform a function that requires administrative access, you preface your command with `sudo` and are prompted for your password (as a reminder that what you are doing could potentially affect the device's ability to function).

The default snap user on the E12 has `sudo` access, and can perform all device administrative tasks. You can create user accounts on the device and grant them `sudo` access as well. For added security, you can create `sudo`-enabled user accounts and then delete the snap user account to further reduce a potential hacker's knowledge of how to access the gateway.

If you would rather work with the root account anyway, you can enable it by assigning a password:

```
sudo passwd root
```

Similarly, you can change the snap password with the same command:

```
sudo passwd snap
```

NOTE: No account can connect via SSH without a password, though connecting over a serial terminal session is possible for accounts with no password.

E12-Specific Software Packages

The E12 comes with several support packages installed, and additional ones are available via `apt` and `pip`.

NOTE: Before installing new packages, be sure to run `sudo apt-get update` to sync your E12 with the package servers and obtain the newest version. This action may take a few minutes, depending on your internet connection speed.

You can pull the latest updates for your gateway by calling:

```
sudo apt-get update
```

```
sudo apt-get install gateway-updates-latest
```

You can also forego the previous commands and install updates individually. Note that the steps below achieve the same outcome as the `sudo apt-get update` and `sudo apt-get install gateway-updates-latest` commands.

First, you can upgrade SNAPconnect and the encryption libraries necessary for AES128 communications using these commands:

```
sudo -H pip install snapconnect -i https://update.synapse-wireless.com/pypi/

sudo -H pip install --extra-index-url https://update.synapse-wireless.com/pypi snaptoolbelt

sudo -H pip install pycrypto
```

Finally, check for any updates to other E12-specific packages¹:

```
sudo apt-get install E12-leds E12-buttons E12-gpio-scripts E12-network-help E12-snap-utils
```

These installations include the following packages, which are installed in `/usr/local/bin` except where noted otherwise:

E12-leds, E12-buttons packages - a simple LED and button control scripts package	led-1, led-2, led-3, led-4, led-a	Controls lighting for leds
	button	Reads button states
E12-gpio-scripts package - Initializes GPIO lines (/etc/rc2.d)	S30gprios	Startup script to initialize GPIO lines package
E12-snap-utils package - maintenance and support scripts for RF220SU.	reset-snap-node	resets the RF220SU
	wake-snap-node	wakes the RF220SU (if it was sleeping)
	flash-bridge	performs maintenance on the RF220SU

¹ Remember that copying and pasting from PDF files can give unpredictable results. Try pasting into a text editor first to be sure that the complete command comes across as one line, and that there are not added characters in your pasted text. Then, copy from the text editor and paste into your command window. Or, type it into the command window directly.

E12 Physical Interfaces

The E12 includes a tri-color LED that you can control from your programs, plus a button you can monitor. Control scripts in the E12-led and E12-button packages assist with controlling the LED and monitoring the button.

E12 LEDs

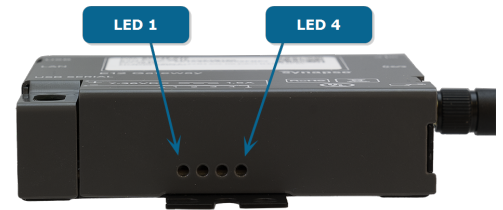
The four processor-controlled LEDs are single color - green - and by default are activity indicators. The LEDs are numbered 1 - 4 proceeding from left to right. You can set the LED state using the following commands:

- led-1 on / led-1 off
- led-2 on / led-2 off
- led-3 on / led-3 off
- led-4 on / led-4 off
- led-a [red | green | amber | off]

led1 is closest to the terminal blocks and is labeled "1".

An additional LED is on the side of the E12 next to the antenna. This LED, known as LED A, is controlled via the Linux instance running on the E12. The other LED, LED B, is controlled via the SNAPpy script running on the internal SM220 module.

Finally, there are two LEDs on the E12 ethernet port. A green LED that indicates the E12 is connected to the network, and a yellow LED that illuminates when the E12 is configured for 100Mbps communications.



The SNAP Module-Controlled LED

The unit's SNAP module controls the tri-color LED on the antenna side of the case (LED A) via GPIO_1 (green) and GPIO_0 (red). (For amber, use both green and red.) This LED is only accessible via the SNAP module. It cannot be controlled by the E12's AM335x processor, except through calls to the SNAP module.

These two IO lines from the SNAP module will light their respective colors when written high. This sample code demonstrates its use:

```
from synapse.platforms import *

GREEN=GPIO_1
RED=GPIO_0

@setHook(HOOK_STARTUP)

def onStartup():
    setPinDir(RED, True)
```

```
    setPinDir(GREEN, True)

    LED_off()

def LED_off():
    writePin(RED, False)
    writePin(GREEN, False)

def LED_green():
    writePin(GREEN, True)
    writePin(RED, False)

def LED_red():
    writePin(GREEN, False)
    writePin(RED, True)

def LED_amber():
    writePin(RED, True)
    writePin(GREEN, True)
```

LED A is the only LED controllable directly from the SNAP module. The other three LEDs are controlled from the E12's AM335x processor.

The E12 Button

The button on the bottom of the E12 is fully user-accessible. You can monitor the button state at GPIO 112. The E12-buttons package provides a Bash script that prints the button status to STDIO and returns the button status (as 1 for up or 0 for pressed).

You can monitor the AM335x processor GPIO directly rather than using the Bash script if you find that to be easier. Unlike the Bash script that set states on the E12, this script does not require sudo access to run.

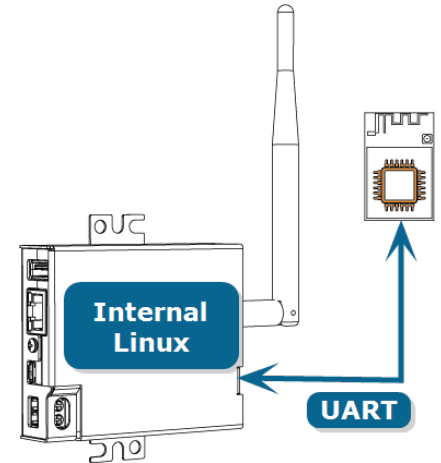
Working With the Gateway's SNAP Module

The E12 supports an internal SNAP module for 2.4GHz communications, and the E12 can access the SNAP module serially via serial ports

`/dev/snap0` and `/dev/snap1` connecting to UART0 and UART1 on the module, respectively. By default, SNAP-powered modules communicate serially

over UART1, so when making your SNAPconnect or SNAPtoolbelt connection to the module, you should use `/dev/snap1` unless you have modified your modules's default UART settings.

For detailed instructions on SNAPconnect, please consult the SNAPconnect Python Package Manual, available from <http://developer.synapse-wireless.com/software/snapconnect>.



In addition to the serial connections, there is one GPIO pin from the E12 that is tied to the module for controlling and signaling.

- GPIO 48: Tied to the Reset pin on the RF220SU, you can use this pin to reboot the module.

Waking the SNAP Module

At times it may be helpful to have the SNAP module in your E12 sleep, and then be woken by the E12's processor. If you have installed the recommended E12-snap-utils package, you can easily do this by defining GPIO_F1 on the SNAP module as a wake pin, like this:

```
from synapse.pinWakeup import *
from synapse.platforms import *
@setHook(HOOK_STARTUP)
def onStartUp():
    setPinDir(GPIO_12, False)
    setPinPullup(GPIO_12, True)
    wakeupOn(GPIO_12, True, True)
```

Now, whether your SNAP module is in a timed sleep or an untimed sleep, having the code on your E12 invoke this command will wake the SNAP module:

```
/usr/local/bin/wake-snap-node
```

This command invokes a Bash script to pull the E12s GPIO33 high, pause a second, and then pull the line low. The Bash script must be invoked as `sudo` or by a process invoked as `sudo`. You can examine the Bash script to see how the GPIO value is controlled for use in your own scripts, should you wish to use the pin as a one-bit signal to the SNAP module.

Resetting the SNAP Module

There is a pin you can use to reset your module should you need to. (This is necessary, for example, when you reset factory parameters on the node.)

The E12-snap-utils package also provides a script to assist with this. Invoke this Bash script to briefly pull the reset pin low and then release it to high, resetting the node:

```
/usr/local/bin/reset-snap-node
```

While it is important to be able to do this, in most circumstances it will be less useful day-to-day. (If you need to reset your SNAP module daily, you may have code issues you need to address.)

Restoring Functionality to an Unresponsive SNAP Module

The risk of having a module that provides several configuration options is it expands the possibility of a misconfiguration causing you to lose contact with the module. Several things can make a module unresponsive, from setting an encryption key that you then forget, to putting a script on the device that sends the node to sleep with an invalid wake pin defined.

The Synapse Wireless Portal software provides mechanisms for node recovery, but since you cannot make a serial connection from the SNAP module in your E12 to Portal, that functionality needs to exist on the E12 as well.

If you find that your SNAP module is unresponsive or unreachable over the air or serially, the first suspect is typically the user script on the module. Many a programmer has accidentally specified the wrong wake pin or accidentally dropped a node into an endless loop. So, the first thing to try in module recovery is forcibly removing the SNAPpy script from your SNAP module:

```
sudo flash-bridge -e -p RF220 (for 2.4GHz equipped gateways)
```

WARNING: Addressing the wrong firmware for your unit may render it inoperable, perhaps even permanently. If you are unsure of which firmware to address, contact Synapse customer support.

This leaves your SNAP module's NV parameters untouched, but removes the existing SNAPpy script from the node. You can then load an appropriate script over the air or serially.

If this does not restore your access to the node, the most likely reason for your inability to communicate is mismatched configuration (NV parameters on the node. This could be the result of different encryption keys or encryption types, misconfigured UARTs, differences in how many CRCs are expected, or some other configuration setting. The easiest thing to do next is to have the node default its NV parameters, which you can also do with flash-bridge:

```
sudo flash-bridge -nv -p RF220 (for 2.4GHz equipped gateways)
```

This clears the encryption settings (no key, no encryption), sets UART connections to their default settings (UART1, 38,400 baud, 8N1), and clears other settings to their default levels. (Refer to the SNAP Reference Manual for what the defaults are for your firmware version.)

Typically it is best to start with clearing the script in your node before resetting its parameters, because it is possible for the script to reset (away from default values) parameters that you just reset (to default values).

NOTE: Resetting your SNAP module to default settings does not automatically mean that other devices can talk to it, over the air or serially. It does mean that you now know how to configure those devices to talk to it.

If you have another radio device on channel 13 using network ID 0xABCD, you will have to set that device to channel 4, network ID 0x1C2C to talk to your defaulted SNAP module. You can then use that radio connection to move the E12's SNAP module to your preferred network settings. Or, you could change those settings serially from your E12 — if your E12 is set to communicate serially the way that your SNAP module is (considering encryption keys and types, serial rates, etc.).

The point is: defaulting a device doesn't mean you have it where you want it, only that you now know where to go look for it.

Upgrading the SNAP Module Firmware

Synapse Wireless is always working to improve the experience with SNAP-powered networks, and that means new firmware every now and then. If you find that you want to upgrade the firmware in your gateway's SNAP module, you can do it over the air or serially from the E12. You'll need to download the firmware appropriate to your SNAP module by typing:

```
sudo -H pip install snap_firmware_2.8.1 -i https://update.synapse-wireless.com/pypi/
```

The flash-bridge command we've been using for clearing scripts and resetting parameters saves the day again:

```
sudo flash-bridge -i <imageName> -p RF220 (for 2.4GHz gateways)
```

For this command, <imageName> refers to an absolute or relative path to a Synapse firmware image file, which will have the extension .sfi.

Loading new firmware erases the script previously in the node but does not change any NV parameters (unless the two firmware versions, old and new, have different default values for something).

For example:

First, download SNAP firmware version 2.8.1 by typing:

```
sudo -H pip install snap_firmware_2.8.1 -i https://update.synapse-wireless.com/pypi/
```

This will download the firmware images and put them in the folder:

```
/usr/local/lib/python2.7/dist-packages/snap_firmware_2_8_1/
```

Then you can update the E12 by typing:

For 2.4GHz Gateways:

```
sudo flash-bridge -i /usr/local/lib/python2.7/dist-packages/snap_firmware_2_8_1/RF220SU_AES128_SnapV2.8.1.sfi
```

Accessing the MicroSD Slot

The E12 includes an on the board² microSD slot for reflashing your device to its factory state. You can also use a card in this slot as additional flash storage on your gateway if you need it.

The following instructions will work for ext4-, FAT32-, or exFAT-formatted cards. Ubuntu Linux 14.04 does not support exFAT by default. You will need to run the following command for exFAT support:

```
sudo apt-get install exfat-fuse exfat-utils
```

To access a card in the microSD slot:

1. Insert the microSD card into the microSD card slot at the end of the E12:
2. Create a mount point for the card. In this example, the directory will be named sdcard, and it will be in the /mnt directory. (If you have previously done this, you do not need to repeat it.)

```
sudo mkdir /mnt/sdcard
```

3. Mount the card. (For these commands, replace *p1* with the partition number you want to mount.)

- a. For cards formatted with the ext4 file system:

```
sudo mount -t ext4 /dev/mmcb1k0p1 /mnt/sdcard
```

- b. For cards formatted with the FAT32 file system:

```
sudo mount -t vfat /dev/mmcb1k0p1 /mnt/sdcard
```

- c. For cards formatted with the exFAT file system:

```
sudo mount -t exfat /dev/mmcb1k0p1 /mnt/sdcard
```

You can confirm it is mounted by using the mount command and looking for an entry like the following (with the appropriate file system format):

```
/dev/mmcb1k0 on /mnt/sdcard type ext4 (rw)
```

You can use the ls command to list the available partitions :

```
ls /dev/mmcb1k0p*
```

² Early versions of the hardware may not include this feature. See the **Factory Restore / Re-Flashing Your E12 on page 24.** section later in this document to determine whether your hardware has it.

Common Linux Operations

The E12 uses Ubuntu 14.04 as its operating system, so you will need to have some Linux knowledge to use the gateway. The internet provides ample documentation for all operations within the capability of the E12, and “Linux Manual” is beyond the scope of this document.

However there are a few operations that are likely to be popular, based on the nature of a gateway. The following information may save you some time (and frustration) from searching the internet.

Editing Linux Files

Many of the configuration suggestions below instruct you to create new files on your E12 or edit existing files. There are several ways to go about this, depending on your choice of methods and tools.

The method that old-school Linux gurus might mock you for not using is the classic Vim (Vi IMproved) text editor. If you are already comfortable in vi or Vim, kindly skip to the next section.³

For people who prefer a little more help on screen, the popular nano text editor is included in the basic E12 distribution. You can edit a file directly by typing `nano /path/to/filename`, or open nano and then open the file directly from within the editor. Remember that if you are attempting to edit a file that your user does not own (e.g., files in `/etc` that are owned by `root`) you should preface your nano command with the `sudo` command in order to open the editor with escalated privileges.

The third option for creating or editing files for the E12 is to create the files on another system completely and then move them into place on the E12. You can move them over an SSH connection or by “sneaker net” using a USB drive. This is the most cumbersome editing option for files changes, but for more elaborate software suites it may be appropriate to install your package this way. If you use this method, remember that Windows and Linux use different line endings. You may need to update your file’s line endings to the Linux standard using a command like this:

```
sed -i -e 's/\r//' file
```

Making Your Software Run at Startup

There are two main types of things you might want to invoke at startup:

- Scripts that run to completion, such as configuration or logging scripts.
- Applications that you want to start as a service that can be started, stopped, and restarted.

As with many things in the Linux world, both of these are easy once you know how.

Running a Script to Completion

Like many Linux distributions, Ubuntu does not follow all the standards. One such place is that by default, Ubuntu boots to runlevel 2, which allows for multiuser connectivity (per the standards) and networking (which the standards

³ Emacs is not included in the base Linux distribution on the E12. You can get it using `sudo apt-get install emacs`

provide at runlevel 3). This is important because it affects where you should add your run-once scripts to have them execute.

There is a Bash script located at `/etc/rc.local` that executes every time the runlevel changes to a new multiuser level. In normal operation, the E12 boots to runlevel 2 and stays there. If you are not actively initializing a new runlevel, this script will only run on boot. You can add commands to this Bash script, which by default does nothing.

As an alternative, you can add a Bash script in the `/etc/rc2.d/` directory to have the script execute each time runlevel 2 is initialized. (This script would run before the `rc.local` script executes.) This `/etc/rc2.d/` directory contains a README file that provides some instructions for naming and configuring your script to run on boot.

Starting a Service

For applications you want to have started as a service, which can be started, stopped, and restarted, you can create an upstart service at `/etc/init/`.

As an example of making a SNAPconnect application run as a service, create a file named `/etc/init/MyOwnApp.conf` and put the following text in it:

```
# SNAPconnect - start a SNAPconnect application as a service
#
description      "Start SNAPconnect"
start on runlevel [2]
stop on runlevel [!2]
exec python /home/snap/my_snapconnect_example.py
```

The command `python /home/snap/my_snapconnect_example.py` would then be executed on boot and stopped on shutdown (or on transition to any other runlevel).

If you want your application to automatically restart (such as if it crashes) you can add the `respawn` option:

```
# SNAPconnect - start a SNAPconnect application as a service
#
description "Start SNAPconnect"
start on runlevel [2]
stop on runlevel [!2]
respawn
exec python /home/snap/my_snapconnect_example.py
```

You could also administer the application with these commands:

```
sudo service MyOwnApp start
sudo service MyOwnApp restart
```

```
sudo service MyOwnApp stop
```

This basic example gives you a starting point for starting your own services. Examine the other *.conf files in the /etc/init/ directory for further examples of how to configure your services.

Setting Your E12's Clock

The E12 has an NTP client that connects to time servers on the internet to keep its clock set appropriately (to UTC). However the system clock and the hardware clock can get out of sync over time, resulting in the E12 using the hardware clock's time when internet connectivity isn't available.

NOTE: These steps are typically performed during setup. The information is repeated here for ease of reference.

First, you should specify the timezone where your device will reside. An easy way to do this is to use tzdata, which allows you to select the general region, and then select the specific zone for your location.

```
sudo dpkg-reconfigure tzdata
```

Next, and only if the E12's date is not set (i.e. it is not connected to a network so it does not set the date from an NTP server, and the hardware clock has never been set), set the date manually. The following example sets the date to April 20, 2016, at 12:30:59 p.m.

```
sudo date --set "2016-04-30 12:30:59"
```

```
Sat Apr 30 12:30:59 CDT 2016
```

You can set the hardware clock from the system clock using the hwclock command.

```
sudo hwclock -wu
```

Resetting a Lost User Password

If there's one thing you can count on, it's that at some point a user will forget his or her password. If you have another administrative (sudo) user defined on the device, that user can reset the lost password.

However, if you have forgotten all the passwords for every account, the only way to regain control of your gateway is to reflash your gateway.

As a preventative measure, you can use the built-in recovery utility to create a flash drive key which will unlock a single user account on your gateway if the flash drive is present on bootup. The key will be unique and for one time use, meaning after you reset a password with it, that key won't work again (the flash drive will still be a normal flash drive.)

To make a recovery flash drive, first ensure you have the newest version of the utility:

```
sudo apt-get install 50-password-reset
```

Then, insert the flash drive you wish to store your recovery key, and run:

```
sudo generate-usb-password-reset USERNAME
```


Where username is the account you wish to be unlocked if this flash drive is present on boot. The key will then be written to the flash drive and stored locally on your gateway. On subsequent boots, if the flash drive containing the key is present, the account specified will have its password deleted, and you will have to supply a new password upon logging in. The key will NOT work again after use.

If you need to create recovery keys for multiple gateways, you can use the same flash drive multiple times. A unique key will be generated per gateway, but they can all be stored on the same flash drive and the only one which will be removed is the one which was used.

Mounting an External Drive

The USB connection on the E12 is available for mounting external storage, whether that's a flash drive for “sneaker-netting” files, or a larger drive for data aggregation. You can mount and unmount the external drive using these commands, changing the number from 1 to the number appropriate for the partition on your drive:

```
sudo mount /dev/sda1 /mnt
```

```
sudo umount /dev/sda1
```

These will mount (and then unmount) the external drive to the `/mnt` directory in your E12's file system. You can specify the mount point of your choice, but the mount point must exist as a directory before the drive can be mounted to it.

Extending the E12 with USB Accessories

The E12 has drivers to support many USB devices, such as a second SNAP-powered bridge (using an SN220 or SN132 carrier board), Wi-Fi devices, cell modems, or external storage. While the complete details of configuration options available on these devices fall outside the scope of this document, there are some common considerations that may prove useful.

USB Power

The USB 2.0 connection on the E12 is not rated as a “battery-charging” connection, and may not provide sufficient current for high-drain devices, such as some external hard drives.

If you find you are having problems with your USB devices (e.g., external hard drives failing to mount, or cellular connections losing their connections), we recommend you try connecting the device to the E12 through a powered USB hub.

Connecting to an Additional SNAP Device

The E12 can support a second SNAP-powered node through its USB port. You can connect an SN132 or SN220 SNAPstick, or you can use an FTDI USB-serial cable to connect to an SN171 ProtoBoard or some other hardware that uses a DE9 connector to make an RS232 serial connection.

This can allow your E12 to act as a bridge between two radio subnets, where radios are on some combination of different frequencies, different network IDs, and/or different channels.

The E12 provides the drivers that support the FTDI USB-serial cable and the SN132 inherently. To use the SNAPstick SN220, you need to modify it to operate as a serial device rather than a USB device. For instructions on doing this, refer to the Synapse Wireless technical brief “Configuring an SN220 SNAPstick as a COM Port,” available on the Synapse developer microsite at <http://developer.synapsewireless.com/>.

Whichever device you use, plug the device into the E12’s host USB port and (among other messages) you should see something similar to:

```
usb 1-1: FTDI USB Serial Device converter now attached to ttyUSB0
```

or:

```
usb 1-1: cp210x converter now attached to ttyUSB0
```

The key here is the line that says “converter now attached to ttyUSB#” (ttyUSB0, in the example shown). You will use this device handle, “ttyUSB#”, to communicate with the SNAP device. In your SNAPconnect application, you would open a connection to the device like this:

```
com.open_serial(type=SERIAL_TYPE_RS232, '/dev/ttyUSB0')
```

Using `usb_modeswitch`

Many USB Wi-Fi and cell modems now come with a small amount of onboard storage, typically used to automatically install drivers when connected to a Windows host. When the device first connects, it appears as a small flash drive or virtual CD-ROM. After installing the necessary drivers, the Windows host sends a signal to the device instructing it to “mode switch” – to unmount the storage and expose itself as a Wi-Fi (or cellular) device.

Ubuntu Linux also automatically handles many of these devices. But there may be some out there that Ubuntu does not recognize by default. If you find that the E12 is not recognizing your device, consider installing `usb_modeswitch`, which contains a library of parameters for converting devices like these.

```
sudo apt-get install usb-modeswitch
```

Then, plug your device in again and you are likely to find that it works as expected.

Factory Restore / Re-Flashing Your E12

From time to time you may need to restore an E12 to the factory default state. The instructions below will help you do that.

Restoring from a MicroSD Card

- Download the newest microSD card E12 installer image from:
<https://developer.synapse-wireless.com/downloads/gateways/index.html#gateway-downloads>
- Write this image to your microSD card.
 - In Windows, this is easiest using something like Win32DiskImager.
 - In Linux, you can use dd from the command line, :

```
$ dd if=E12-VERSION-sdcard.img of=/dev/sdX bs=1M
# where E12-VERSION-sdcard.img is the sdcard image file
# and /dev/sdX is the device file of the uSD card device
$ sync
$ eject /dev/sdX
```

WARNING: Make sure that the “of” variable points to the correct device before executing this command. (An easy way to verify which device is the SD card is to execute the ls command in the /dev directory before and after inserting the SD card.) Writing to the wrong device could potentially overwrite critical information such as your system hard drive.

- Remove power to the device.
- Insert the microSD card into the microSD card slot.
- Hold the button near the USB port, apply power, and release the button. On older boards, you may experience a 4 - 5 minute delay before the board begins programming. You can identify affected boards by a black Synapse logo next to the programming button.
- A few moments after programming begins, LEDs 1, 2, 3 and 4 will begin cycling to indicate the E12 is being programmed.
- After about five minutes (your time may vary depending on factors such as the speed of your microSD card), the LEDs will all blink and then stay on, indicating that the process is complete.
- Disconnect power from the device, and remove the microSD card.
- Your E12 is now refreshed and ready to use.

Specifications and Installation

The Synapse Wireless E12 gateway is a free-standing ARM Cortex-A8 based Linux computer running Ubuntu 14.04, and incorporating a 2.4 GHz Synapse RF module that connects the device to SNAP-powered mesh networks. The gateway is available with serial connectivity through a microUSB connection, and Ethernet connectivity through the RJ-45 connector.

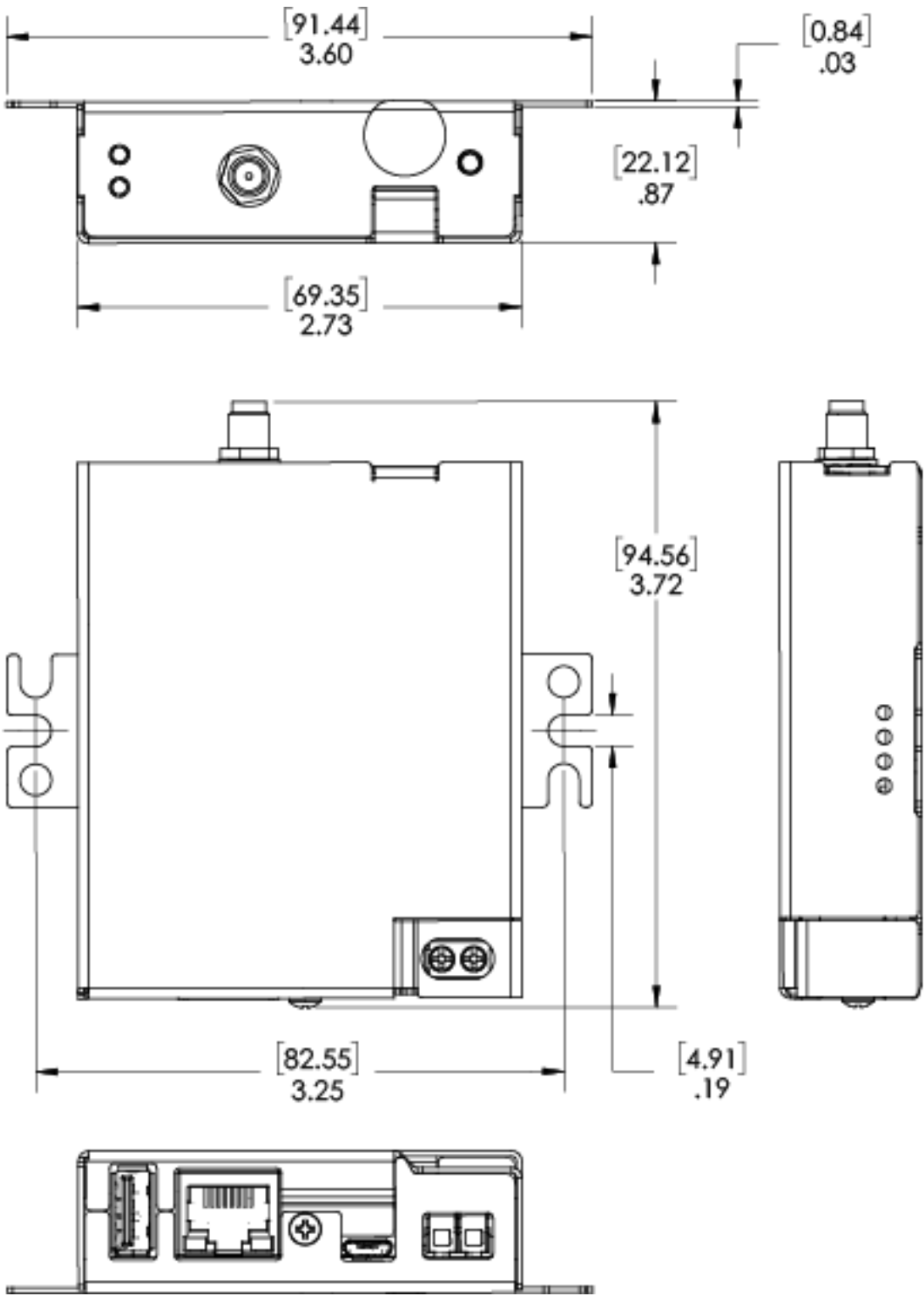
This arrangement provides for a wide range of possibilities for monitoring sensor networks, controlling remote devices, and driving the internet of things.

Specifications

	E12
OS	Ubuntu 14.04 LTS, Linux kernel
CPU	TI AM335x 1GHz
Flash	4GB NAND FLASH memory
RAM	512M DDR3
Ports	10/100 Ethernet uSD card USB 2.0 Type-A USB Micro-B (serial)
Operating Temperature	-40C - 70C*
Board Size	15.5cm x 9cm x 2cm
Unit weight	582 grams (without antennas)
Input Voltage	Nominal: 12-24V DC Absolute: 7-36V DC
Storage Expansion	μSD – internal
LEDs / Buttons	4 Green LEDs 2 Red/Green LEDs 1 Button

NOTE: This equipment is certified by Underwriters Laboratories for operation in a maximum ambient temperature of 60°C. The product safety standard to which this unit is evaluated and certified, IEC 60950-1, and UL 60950-1 for the US and Canada, specifies a maximum temperature limit of 70°C on metal surfaces that may be touched. During operation, there is a slight temperature rise on the surfaces of the E12. Therefore, when installed into an ambient environment at 70°C, the surface temperatures on the E12 may exceed the limit of 70°C.

E12 Dimensions



Troubleshooting Common Problems

The Ethernet port does not work or eth0 does not appear in ifconfig

Most likely, your MAC address has not been set. If you run `ifconfig -a` and see output similar to:

```
eth_badmac      Link encap:Ethernet  HWaddr 00:1c:2c:ff:ff:ff
```

Your MAC address has reverted to the default and needs to be set. See [SNAPconnect is not working](#) below.

SNAPconnect is not working

Check for one of the following possible issues:

- SNAPconnect may be out of date – prior versions of SNAPconnect were incompatible with some version of the Python Tornado package or may have failed to obtain the MAC address correctly. Upgrade to the latest version of SNAPconnect by using the instructions in [E12-Specific Software Packages](#).

- Your MAC address is not set:

From the linux command line, run:

```
sudo fw_setenv ethaddr "00:1c:2c:xx:xx:xx"
```

(Replace the XX entries with your last three octets of your Ethernet MAC address, which should be found on the label on your E12's case. Be sure to use the Ethernet MAC address (labeled ETH MAC) and not the SNAP MAC address.)

Then reboot.

I cannot SSH into my E12

You cannot SSH into the E12 as root, or any user account which does not have the password set. Be sure to have set a password for the account you want to use to connect.

Regulatory Information and Certifications

RF Exposure Statement

This equipment complies with FCC radiation exposure limits set forth for an uncontrolled environment. This equipment should be installed and operated with minimum distance of 20cm between the radiator and your body. This transmitter must not be co-located or operating in conjunction with any other antenna or transmitter.

FCC Certifications and Regulatory Information (USA Only)

FCC Part 15 Class B

These devices comply with part 15 of the FCC rules. Operation is subject to the following two conditions: (1) These devices may not cause harmful interference, and (2) These devices must accept any interference received, including interference that may cause harmful operation.

Radio Frequency Interference (RFI) (FCC 15.105)

This equipment has been tested and found to comply with the limits for a Class B digital device, pursuant to Part 15 of the FCC rules. These limits are designed to provide reasonable protection against harmful interference in a residential installation. This equipment generates, uses and can radiate radio frequency energy and, if not installed and used in accordance with the instructions, may cause harmful interference to radio communications. However, there is no guarantee that the interference will not occur in a particular installation. If this equipment does cause harmful interference to radio or television reception, which can be determined by turning the equipment off and on, the user is encouraged to try to correct the interference by one or more of the following measures: Reorient or relocate the receiving antenna. Increase the separation between the equipment and receiver. Connect the equipment into an outlet on a circuit different from that of the receiver. Consult the dealer or an experienced radio/TV technician for help.

If this equipment does cause harmful interference to radio or television reception, which can be determined by turning the equipment off and on, the user is encouraged to try to correct the interference by one or more of the following measures:

- Reorient or relocate the receiving antenna.
- Increase the separation between the equipment and receiver.
- Connect the equipment into an outlet on a circuit different from that to which the receiver is connected.
- Consult the dealer or an experienced radio/TV technician for help.

Labeling Requirements (FCC 15.19)

This device complies with Part 15 of FCC rules. Operation is subject to the following two conditions: (1) this device may not cause harmful interference, and (2) this device must accept any interference received, including interference that may cause undesired operation.

If the FCC ID for the module inside this product enclosure is not visible when installed inside another device, then the outside of the device into which this product is installed must also display a label referring to the enclosed module FCC ID.

Modifications (FCC 15.21)

Changes or modifications to this equipment not expressly approved by Synapse Wireless, Inc. may void the user's authority to operate this equipment.

Declaration of Conformity

(In accordance with FCC 96-208 and 95-19)

Manufacturer's Name: Synapse Wireless, Inc.

Headquarters: 6723 Odyssey Drive, Huntsville, AL 35806

Synapse Wireless, Inc. declares that the product:

Product Name:E12-0

to which this declaration relates, meet the requirements specified by the Federal Communications Commission as detailed in the following specifications:

- Part 15, Subpart B, for Class B equipment
- FCC 96-208 as it applies to Class B personal computers and peripherals

The products listed above have been tested at an External Test Laboratory certified per FCC rules and has been found to meet the FCC, Part 15, Emission Limits. Documentation is on file and available from Synapse Wireless, Inc.

Industry Canada (IC) Statement

This Class B digital apparatus complies with Canadian ICES-003.

Cet appareil numérique de la classe B est conforme à la norme NMB-003 du Canada.

